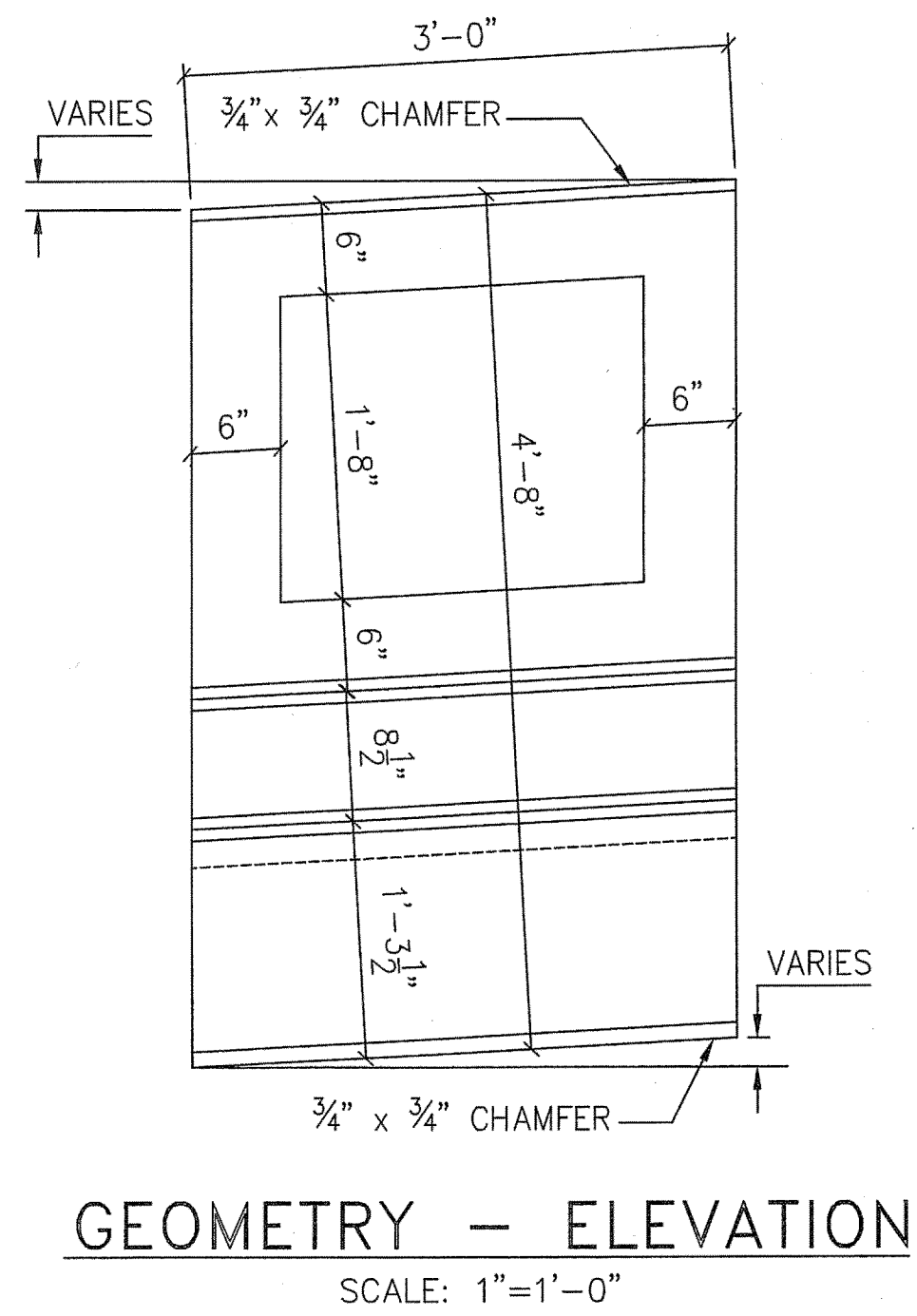
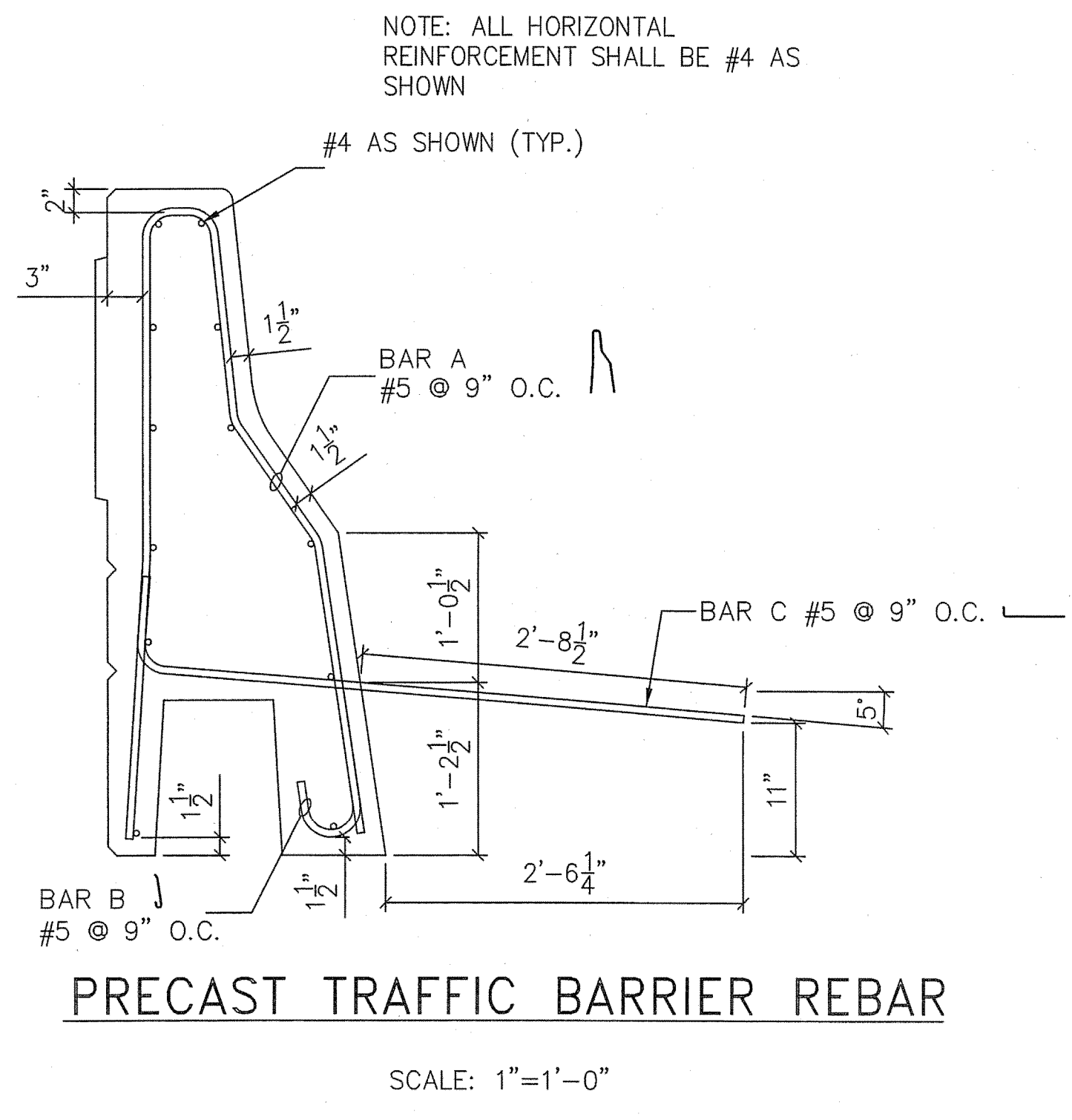


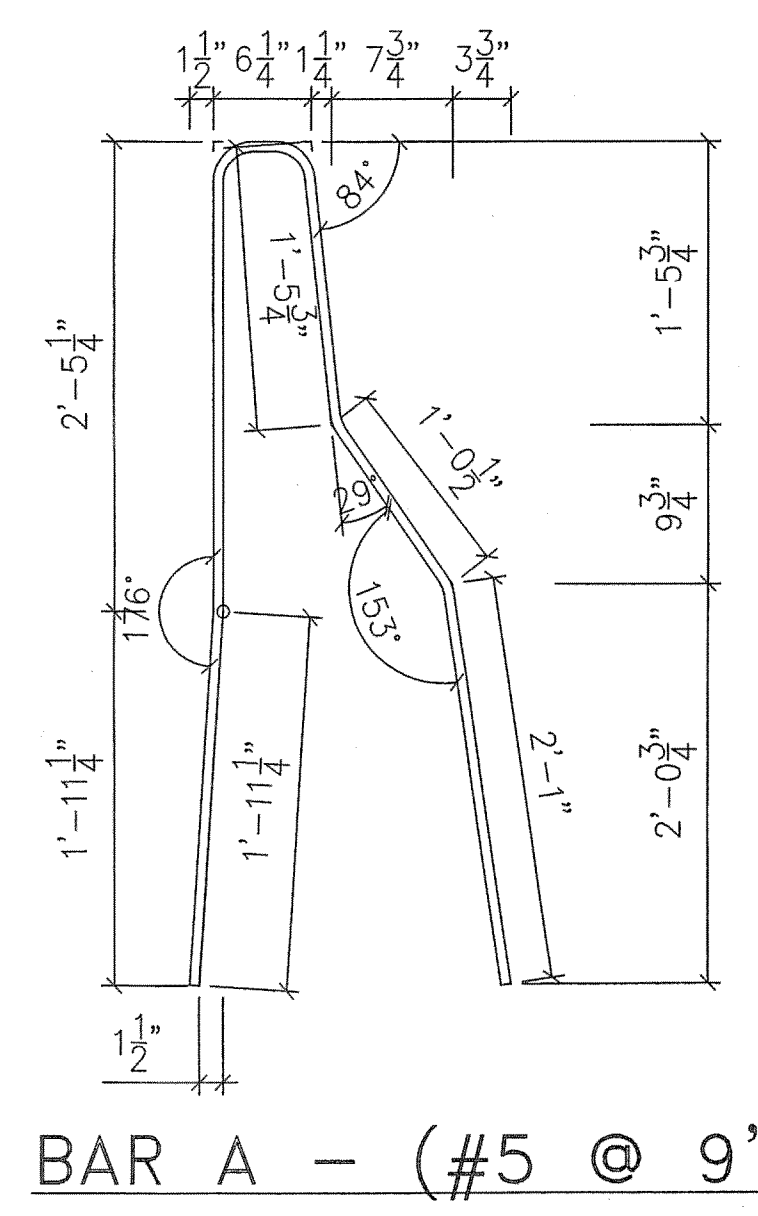
NOTE: REINFORCEMENT IS NOT SHOWN FOR CLARITY  
**PRECAST TRAFFIC BARRIER DIMENSIONS**  
 SCALE: 1"=1'-0"



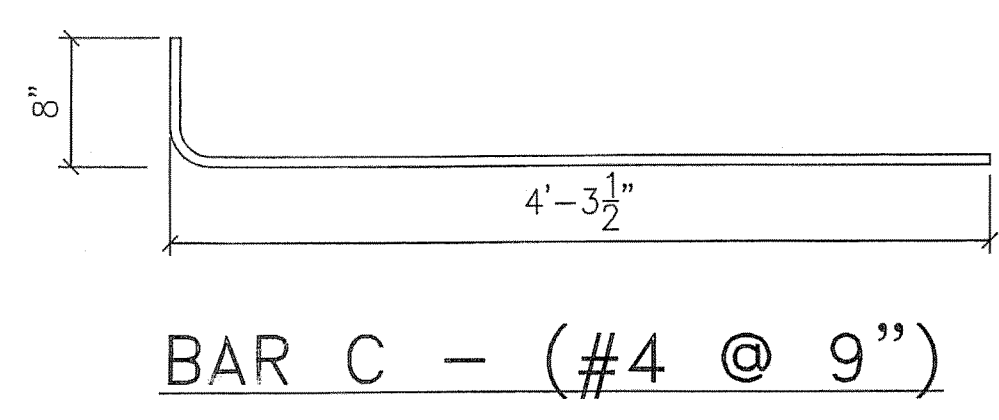
**GEOMETRY - ELEVATION**  
 SCALE: 1"=1'-0"



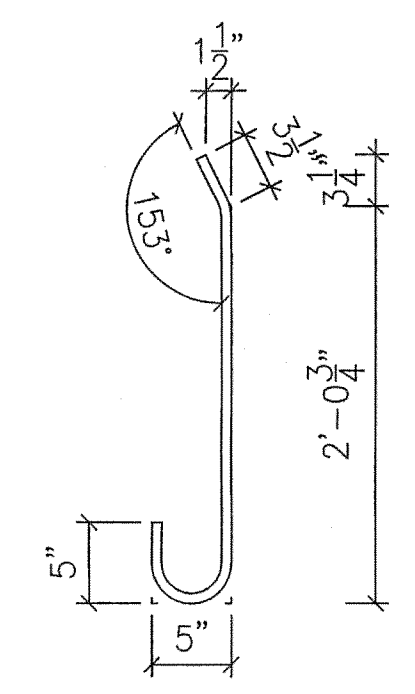
**PRECAST TRAFFIC BARRIER REBAR**  
 SCALE: 1"=1'-0"



**BAR A - (#5 @ 9")**

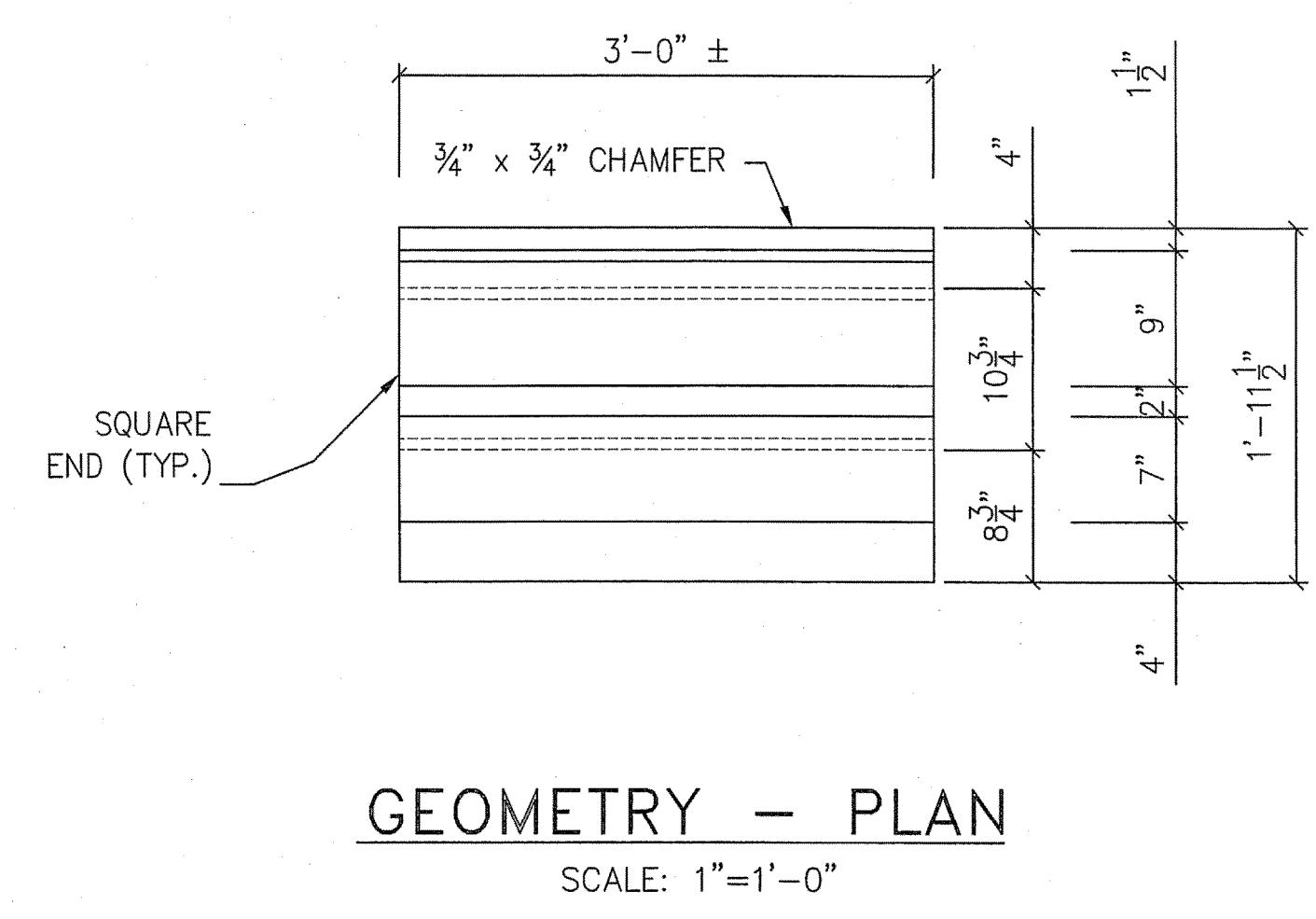


**BAR C - (#4 @ 9")**

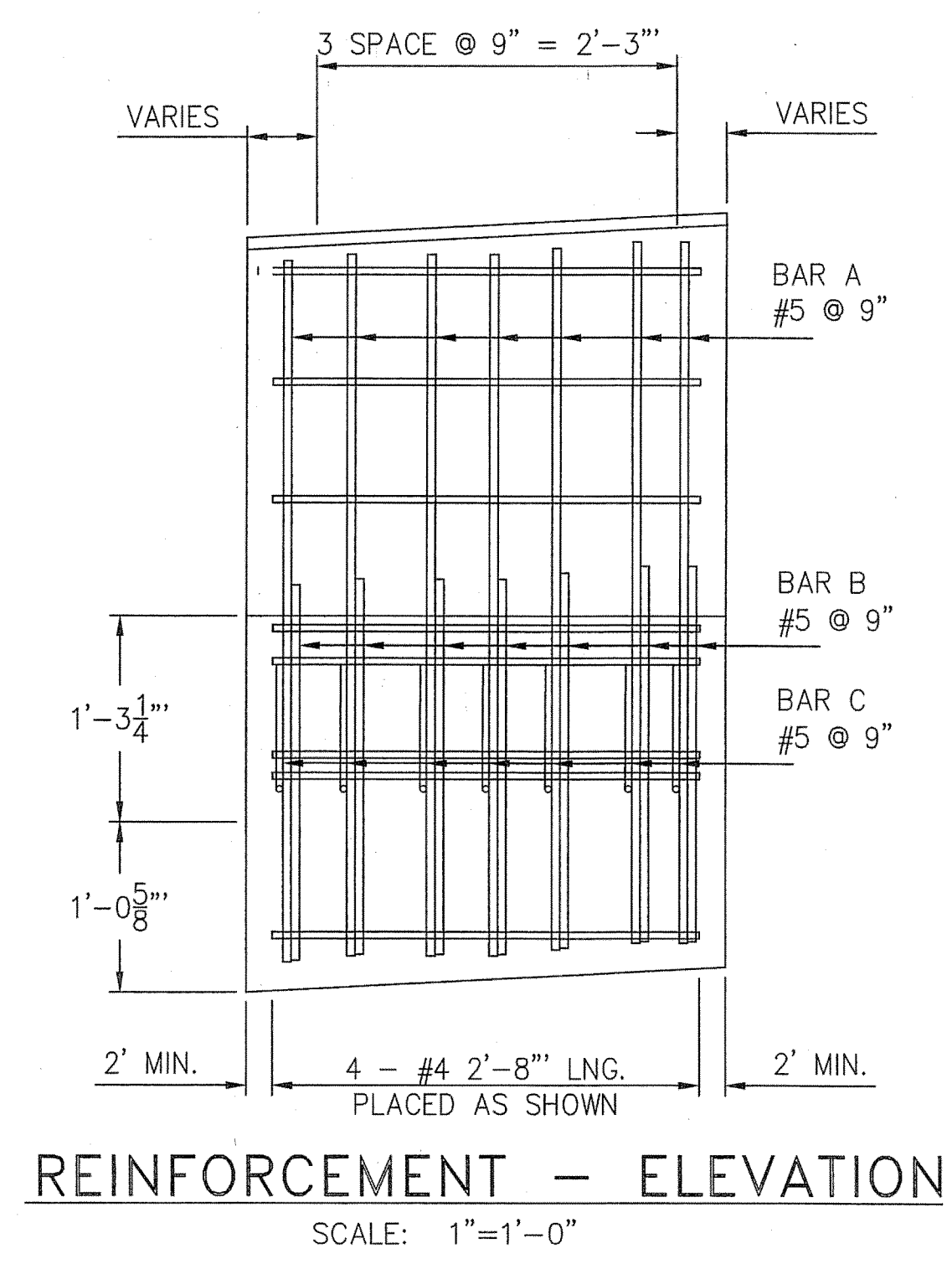


**BAR B - (#5 @ 9")**

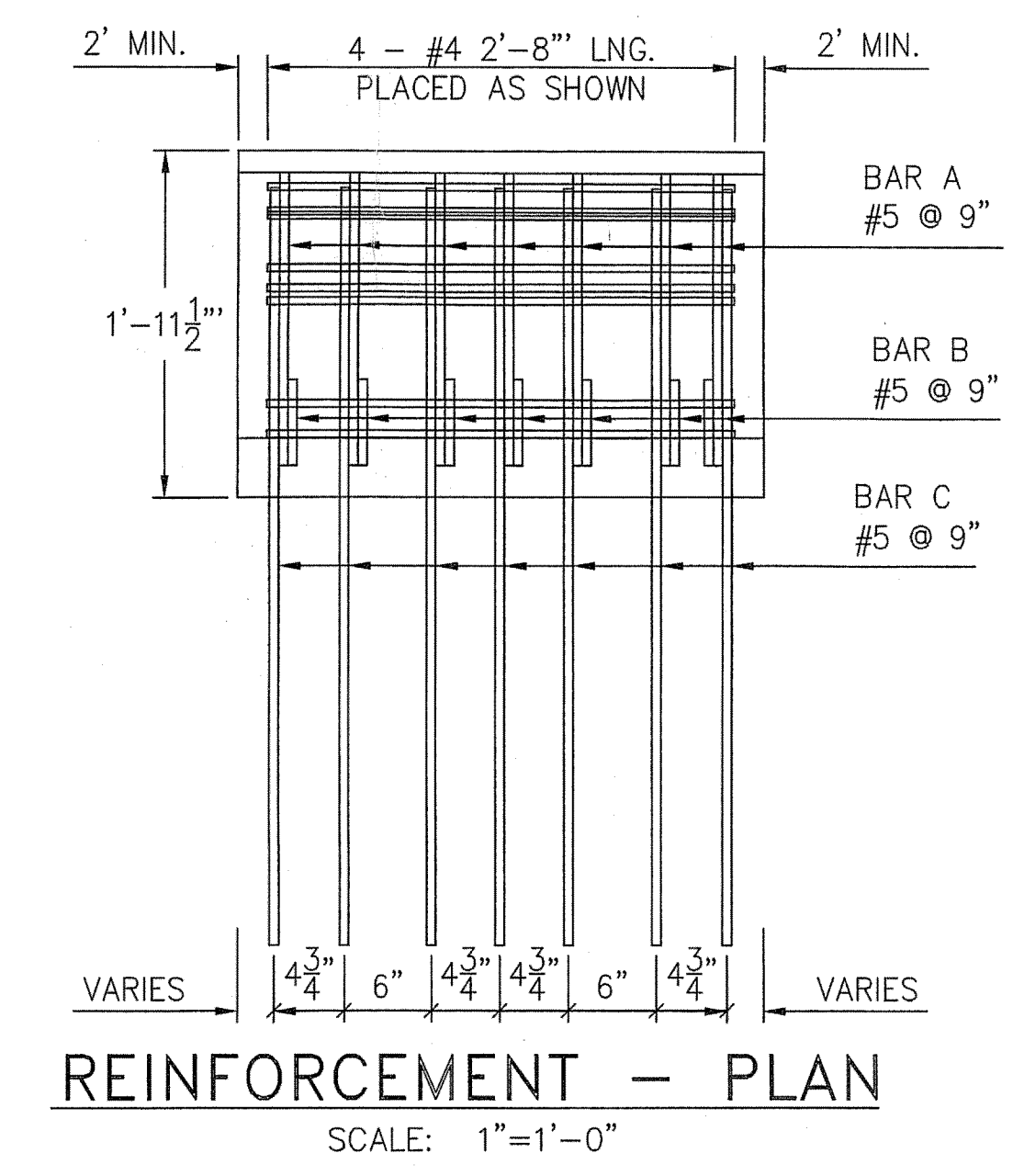
**BAR BENDING DETAILS**  
 SCALE: 1"=1'-0"



**GEOMETRY - PLAN**  
 SCALE: 1"=1'-0"



**REINFORCEMENT - ELEVATION**  
 SCALE: 1"=1'-0"

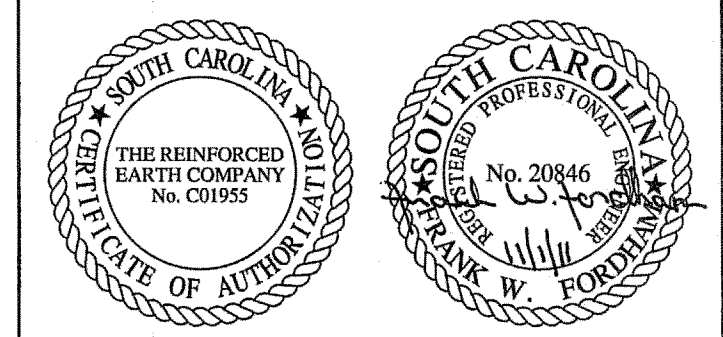


**REINFORCEMENT - PLAN**  
 SCALE: 1"=1'-0"

**SCDOT** South Carolina Department of Transportation  
 LOW COUNTRY REGIONAL PRODUCTION GROUP  
 FOR FABRICATION  
 FOR FABRICATION-COMMENTS IN RED  
 STRUCTURAL ENGINEER: [Signature] DATE: 10/20/11

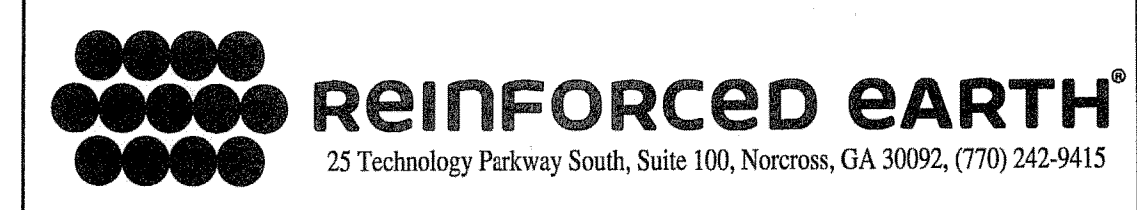
A. FURNISH AS SUBMITTED   
 B. FURNISH AS NOTED   
 C. REVISE AND RESUBMIT   
 D. REJECTED   
 E. ENGINEERS REVIEW NOT REQUIRED   
 This review is for general conformance with design concept only. Any deviation from plans or specifications not clearly noted by the Contractor has not been reviewed. Review by the Engineer shall not serve to relieve the Contractor or the contractual responsibility for any error or deviation from contract requirements.  
 HDR ENGINEERING INC. Of the Carolinas  
 BY: [Signature] DATE: 10/20/11  
 SHOP DRAWING TRANSMITTAL NO. 20846  
 PROJECT: 10.037229A

CERTIFIED WITH RESPECT TO THE INTERNAL STABILITY OF THE REINFORCED EARTH STRUCTURES ONLY



**PRECAST BARRIER TYPE TBPX 1,2,3&4**  
 (TO BE USED AT APPROACH SLAB LOCATIONS)

This drawing contains information proprietary to The Reinforced Earth Company, and is being furnished for the use of SOUTH CAROLINA DOT only in connection with this project, and the information contained herein is not to be transmitted to any other organization unless specifically authorized in writing by The Reinforced Earth Company. The Reinforced Earth Company is exclusive licensee in the United States under patents issued to Henri Vidal, and the furnishing of this drawing does not constitute an expressed or implied license under the Vidal patents.	The design contained on these drawings is based on information provided by the owner. On the basis of this information, The Reinforced Earth Company has designed, and is responsible for the internal stability of the structure only. External stability, including foundation (bearing capacity and settlement) and slope stability (sliding and rotation), is the responsibility of the contractor's engineer.		DESIGNED BY:					PROJECT NAME US 17 / I-526 HUNGRYNECK BLVD INTERCHANGE	DATE 10/28/11
			PROJECT ENG.:					LOCATION SOUTH CAROLINA CHARLESTON COUNTY	CONTRACT NO. RE-13843
			CHECKED BY:					OWNER SOUTH CAROLINA DOT	DRAWING NO. 21 OF 26
			ENG. MANAGER:	REV.	DATE	DESCRIPTION	DRAWING COVERS	PRECAST TRAFFIC BARRIER TYPE TBPX 1,2,3&4	SCALE AS SHOWN



"REINFORCED EARTH" is the registered trademark of The Reinforced Earth Company.